

XTOOL A80 Pro Replacement Instruction

Something important to know:

This replacement guide is only for professional users. It may cause server damages to the device without the guidance of professionals.

1.How to replace battery?

Step 1: Turn off the [XTOOL A80 Pro tablet](#) and make sure the tablet is power off



Step 2: Use screwdriver to loosen the screws (No.1~No.10) in the figure as below to remove the tablet case

Note: there is a cable connected between the mainboard and right handle. Please be careful to remove the handle.



Step 3: Loosen the screws (No.1~No.6)

Disconnect the battery cables connector (No.7) and take out battery



Step 4: Install the new battery replacement

Connect cable connector and tighten the screws to fix battery



Step 5: Install tablet case

Tighten the screws (No.1~No.10) to fix it



Step 6: Press the power button to turn on the A80 Pro tablet

Check whether the tablet works normally

2.How to replace mainboard?

The step 1/2/3 are same as battery replacement operation

Step 4: Loosen the screws (No.1~No.8)

Disconnect the cables connector (No.9~No.14)



Step 5: Remove the handle and failed mainboard

Install the new mainboard replacement



Step 6: Tighten the screws to fix mainboard and battery

Connect all of the cables and assemble the handle



Step 7: Install tablet case

Tighten the screws (No.1~No.10) to fix it

Step 8: Press the power button to turn on the tablet

Check whether the tablet works normally

Note: the step 7 & step 8 are same as step 5 & step 6 in battery replacement.

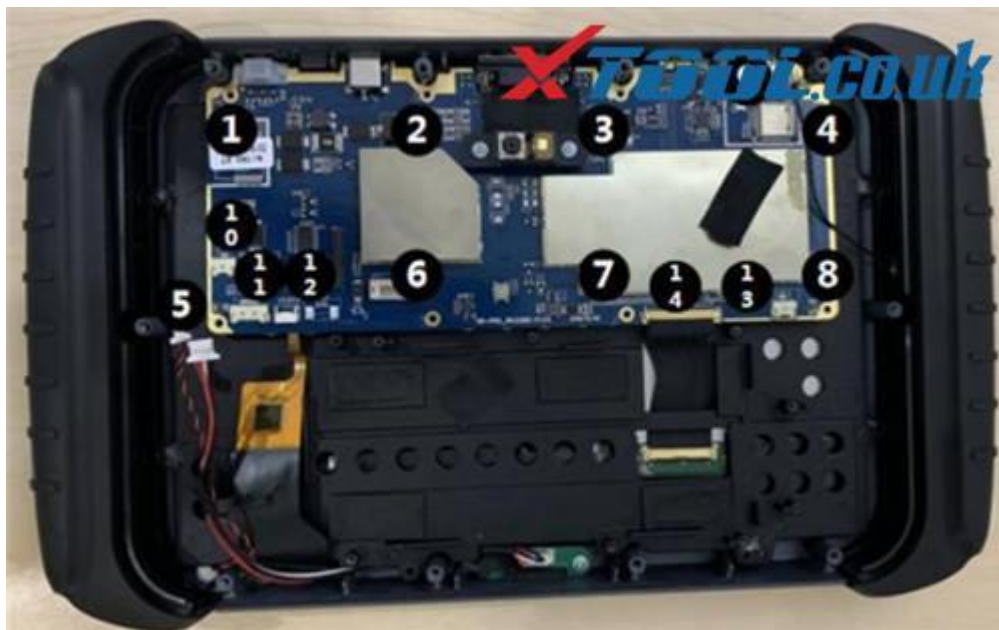
3.How to replace screen?

Operate the step 1/2/3 as same as [A80 Pro battery](#) replacement

Step 4: Loosen the screws (No.1~No.8)

Disconnect the mainboard cables connector (No.9~No.14)

Remove the handle and mainboard



Step 5: Loosen the screws (No.1~No.8)

Remove the screen support



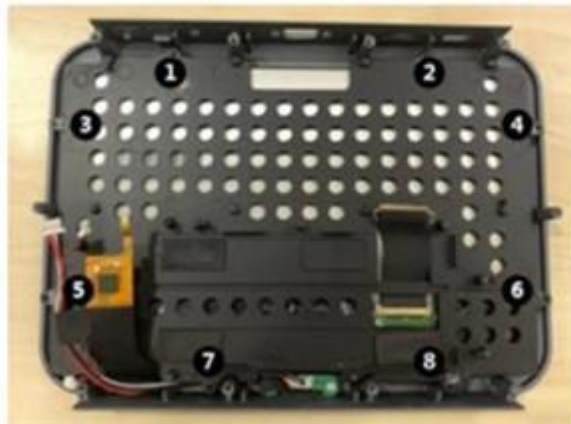
Step 6: Take out the failed screen

Install the new screen replacement



Step 7: Install the screen support

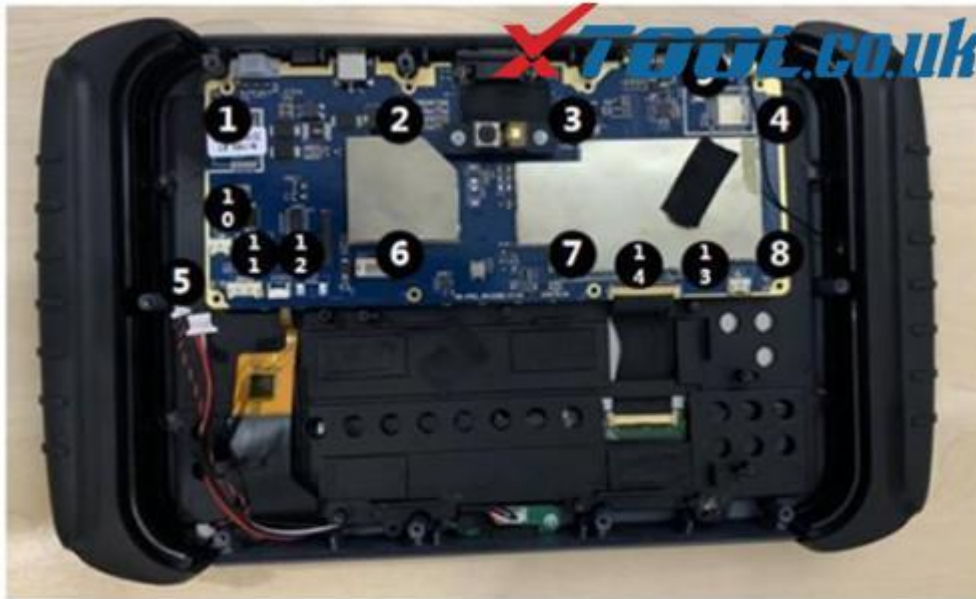
Tighten the screw to fix it



Step 8: Install the mainboard

Tighten the screw to fix it

Connect all cables



Step 9: Install battery

Tighten the screw to fix it

Connect all cables



Step 10: Install tablet case

Tighten the screws (No.1~No.10) to fix it

Step 11: Press the power button to turn on the tablet

Check whether the tablet works well

Note: just check the corresponding pictures same as battery replacement

If you have any other problem with [XTOOL A80 Pro](#) all system diagnosis ECU programmer, please feel free to contact us.

www.xtool.co.uk